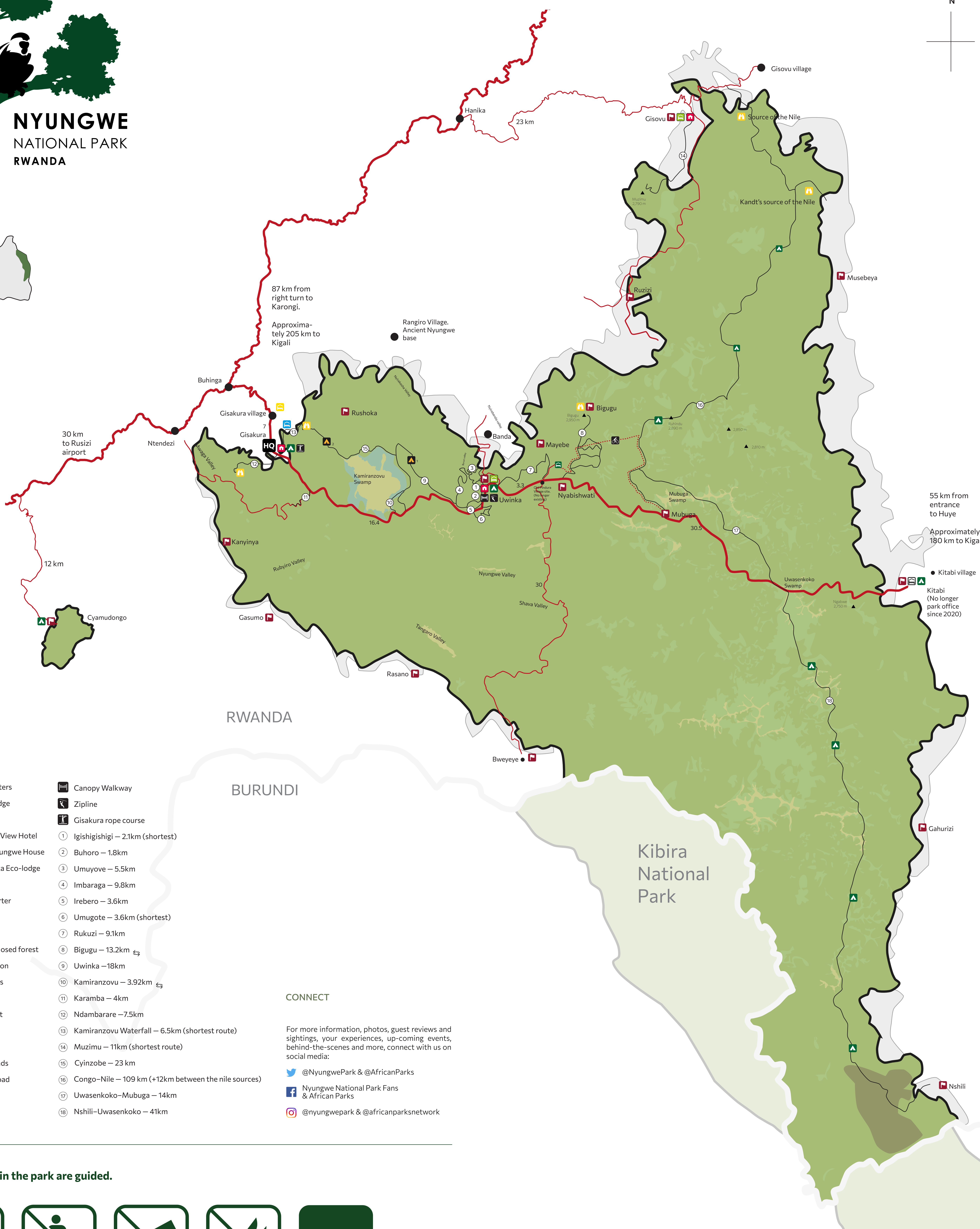
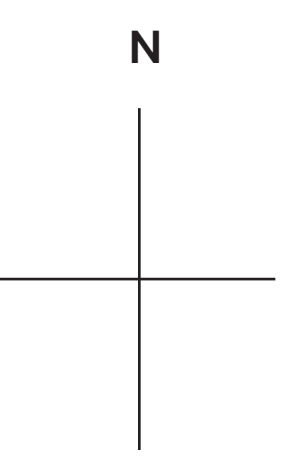
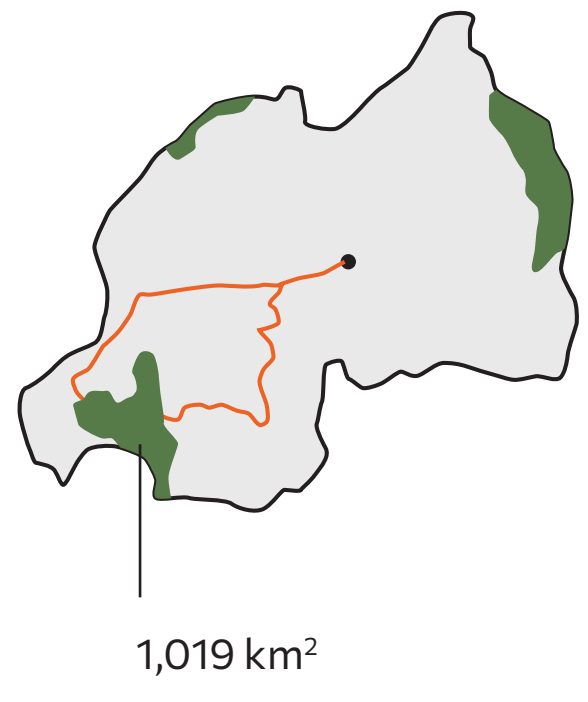




NYUNGWE NATIONAL PARK
RWANDA



LEGEND

- | | | | |
|--|-----------------------------|--|---|
| | Campsites | | Canopy Walkway |
| | Cyzinobe shelters | | Zipline |
| | Munazi Ecolodge | | Gisakura rope course |
| | Guest-houses | | 1 Igishigishigi - 2.1km (shortest) |
| | Nyungwe Top View Hotel | | 2 Buhoro - 1.8km |
| | One&Only Nyungwe House | | 3 Umuyove - 5.5km |
| | Nyungwe Nziza Eco-lodge | | 4 Imbaraga - 9.8km |
| | Park offices | | 5 Irebero - 3.6km |
| | Park headquarter | | 6 Umugote - 3.6km (shortest) |
| | Ranger posts | | 7 Rukuzi - 9.1km |
| | Buffer zone | | 8 Bigugu - 13.2km |
| | Parc limits - Closed forest | | 9 Uwinka - 18km |
| | Open vegetation | | 10 Kamiranzovu - 3.92km |
| | Large wetlands | | 11 Karamba - 4km |
| | Swamp forest | | 12 Ndambarare - 7.5km |
| | Bamboo forest | | 13 Kamiranzovu Waterfall - 6.5km (shortest route) |
| | Border | | 14 Muzimu - 11km (shortest route) |
| | Main road | | 15 Cyinzobe - 23 km |
| | Secondary roads | | 16 Congo-Nile - 109 km (+12km between the Nile sources) |
| | Cycling only road | | 17 Uwasenkoko-Mubuga - 14km |
| | Walking trails | | 18 Nshili-Uwasenkoko - 41km |
| | Summits | | |

CONNECT

For more information, photos, guest reviews and sightings, your experiences, up-coming events, behind-the-scenes and more, connect with us on social media:

@NyungwePark & @AfricanParks
 Nyungwe National Park Fans & African Parks
 @nyungwepark & @africanparksnetwork

All activities in the park are guided.

No walking off trail or without a guide	Do not litter	Do not feed any wild animals	Do not cut or destroy natural vegetation	USD \$150 FINES APPLY

