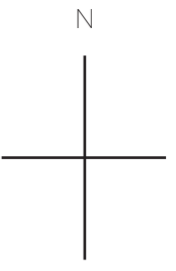
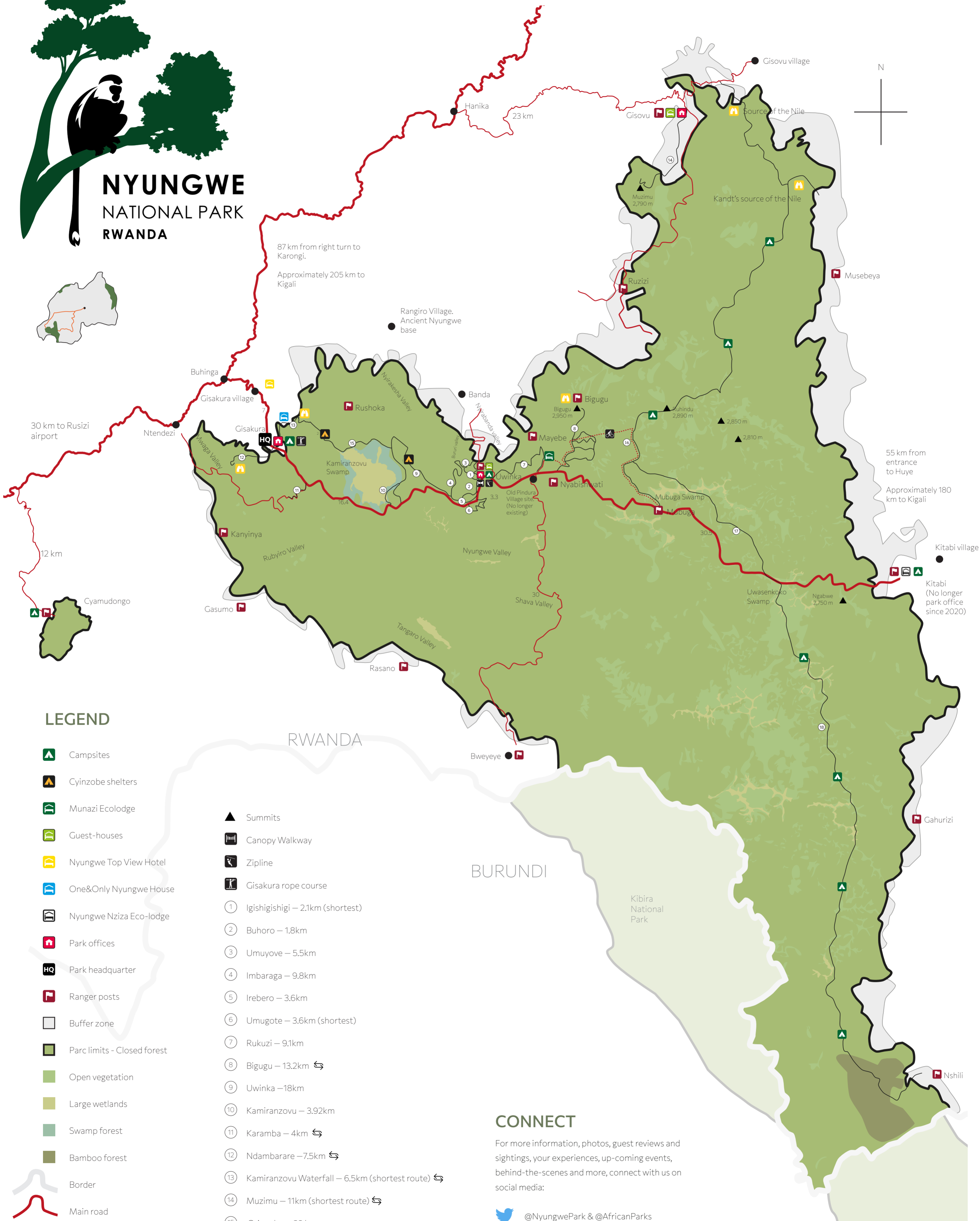
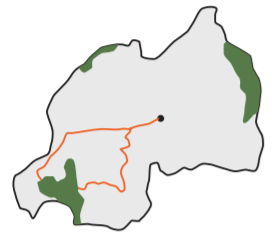




# NYUNGWE NATIONAL PARK RWANDA



## LEGEND

- Campsites
- Cynzobe shelters
- Munazi Ecolodge
- Guest-houses
- Nyungwe Top View Hotel
- One&Only Nyungwe House
- Nyungwe Nziza Eco-lodge
- Park offices
- Park headquarter
- Ranger posts
- Buffer zone
- Parc limits - Closed forest
- Open vegetation
- Large wetlands
- Swamp forest
- Bamboo forest
- Border
- Main road
- Secondary roads
- Cycling only road
- Walking trails
- Summits
- Canopy Walkway
- Zipline
- Gisakura rope course
- 1 Igishigishigi – 2.1km (shortest)
- 2 Buhoro – 1.8km
- 3 Umuyove – 5.5km
- 4 Imbaraga – 9.8km
- 5 Irebero – 3.6km
- 6 Umugote – 3.6km (shortest)
- 7 Rukuzi – 9.1km
- 8 Bigugu – 13.2km ↔
- 9 Uwinka – 18km
- 10 Kamiranzovu – 3.92km
- 11 Karamba – 4km ↔
- 12 Ndambarare – 7.5km ↔
- 13 Kamiranzovu Waterfall – 6.5km (shortest route) ↔
- 14 Muzimu – 11km (shortest route) ↔
- 15 Cynzobe – 23 km
- 16 Congo–Nile – 42.2km (+12km between the Nile sources)
- 17 Uwasenkoko–Mubuga – 14km
- 18 Nshili–Uwasenkoko – 41km



## CONNECT

For more information, photos, guest reviews and sightings, your experiences, up-coming events, behind-the-scenes and more, connect with us on social media:

- @NyungwePark & @AfricanParks
- Nyungwe National Park Fans & African Parks
- @nyungwepark & @africanparksnetwork